

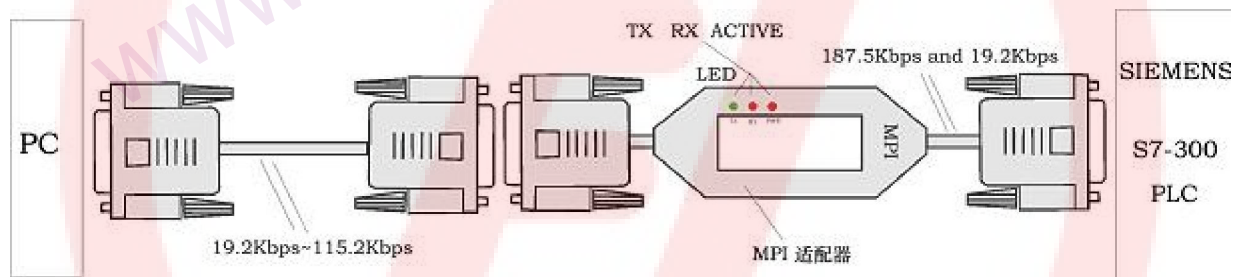
PC MPI-RS232 ISOLATED (V5.3) FOR S7-300/400

Description:

PC / MPI (Isolated) Cable (product order number is: 6ES7 972-0CA23-0XA0) adapters with indicator, also known as PC adapter, to achieve RS232 to RS485 interface and RS232 level conversion to the MPI (Multi-Point Interface) protocol conversion for connecting Siemens S7-300/400 series PLC's MPI port (RS485) and PC's COM port (RS232).

PC / MPI Isolated Cable V5.3 is designed for optical isolation for industrial-type adapter, the RS232 port and RS485 port are equipped with surge protection and lightning protection circuits *can be any hot plug for Siemens S7-300/400 with a full line of PLC and other MPI interface device*, particularly suitable for fragile communication port interferences industrial site, a variety of circuit protection measures to ensure the safe operation of the system.

PC / MPI (Isolated) Cable V5.3 Siemens S7-300/400PLC can connect with third-party touch screen communication, such as EVIEW, Wei Lun, the Kunlun-state such as touch screen.



Characteristics and main technical parameters:

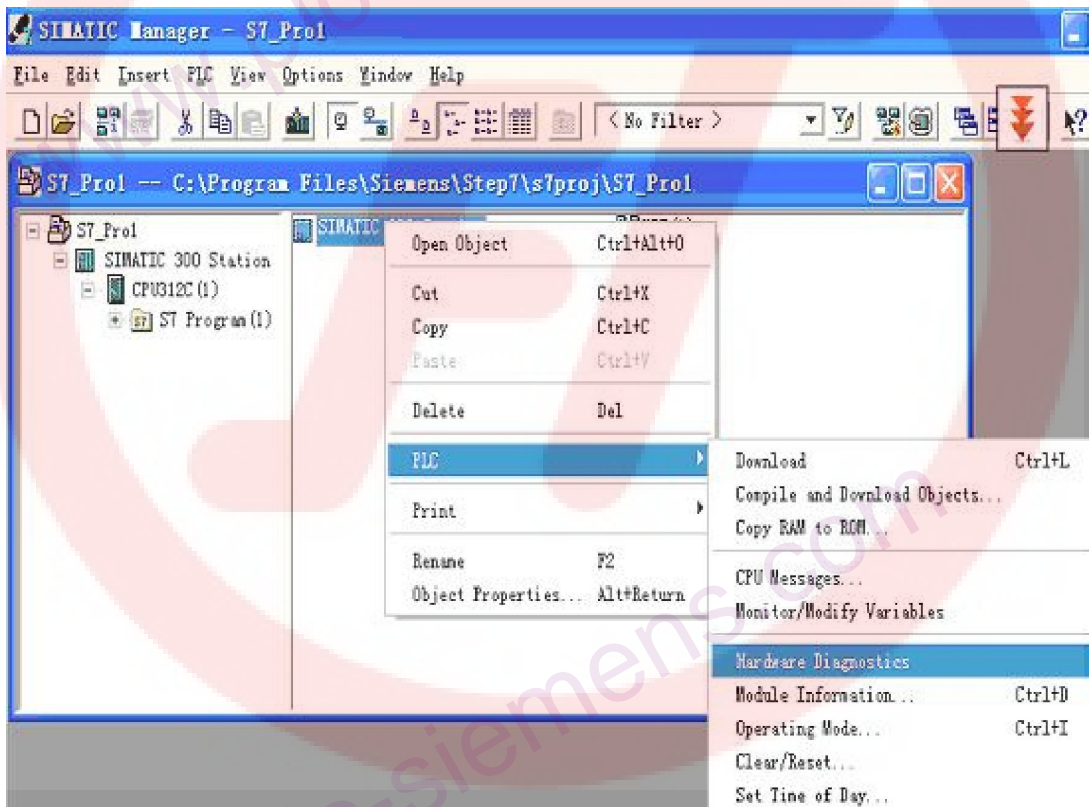
- Power supply: from the PLC's MPI port 24VDC power supply, power consumption is about 1W, with over current protection and surge protection
- Isolation Voltage: 2500VDC 【only ISO (Isolated Cable) type has】
- RS232 port with anti-surge protection, RS485 ports with 600W lightning protection and over current protection
- RS232 port baud rate: 19.2Kbps ~ 115.2Kbps baud rate automatically adapts standard
- MPI port baud rate: 187.5Kbps and 19.2Kbps automatically adapt
- PLC Touch Screen support third-party communication connection
- With working status light, data reception and data transmission indicator light
- Operating temperature: -20 ~ 75 °C
- length: 5.5M

SIEMENS SIMATIC S5, S7 PLC (USED & NEW) AND ACCESSORIES
CONTACT US: WWW.PLC-SIEMENS.COM

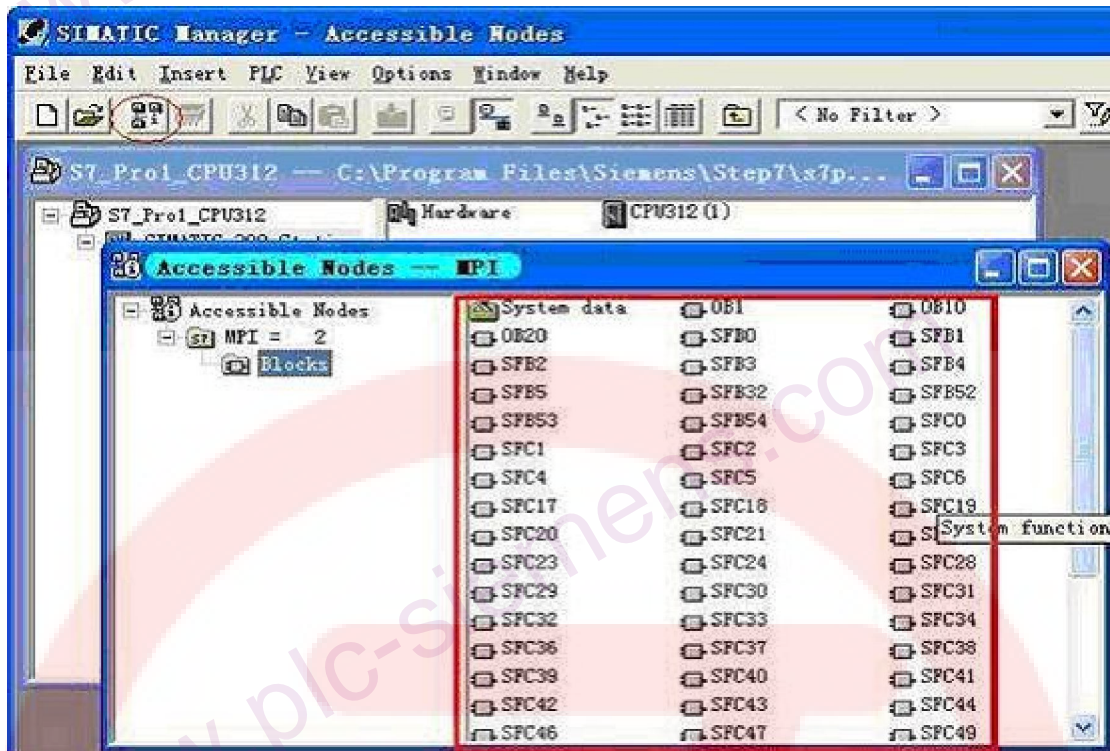
STEP7 software settings:

STEP7 programming software to enter the main interface (SIMATIC Manager), click on "Options" menu under "Set PG/ PC Interface" option into the PG / PC interface settings.

- Double-click the "PC Adapter (MPI)" into the RS232 and the MPI interface parameter settings. *The adapter does not support the "PC Adapter (PROFIBUS)" option.*
- Click the "Local Connection" option is set RS232 interface parameter, correct choice of PC/MPI Connect the computer COM port (RS232), Select the RS232 communication baud rate 19200bps or 38400bps may, PC/MPI will automatically adapt to the selected Baud rate
- Click the "MPI" MPI Interface option is set adapter parameters can be set to 187.5Kbps or 19.2Kbps baud rate may be, the adapter will automatically meet the PLC's MPI port baud rate. Other parameters to default.
- PLC CPU test: Right-click as shown in the "Hardware diagnostics" key, the screen will pop up CPU Model



- Online tests can access node: click the main menu interface, as shown in the red circle button appears in the red box in the data graph, then the line tested, thus set, the line can be online, the program upload, download, monitoring, etc. operation.



- Short-range extension: In the short range communication environment, MPI-side or from the side with a one-way RS232 extended use of welding.
- Long-distance communication
 - a, the distance to extend the RS485 side: The adapter's RS485 port (MPI) at 187.5Kbps baud rate lower maximum communication distance of 1,000 meters, time required between the RS485 port of 7,2 feet separate access 24VDC power supply (Note: 7 feet for the power supply positive) from more than 1000 meters can be installed in the bus RS485 repeaters to extend the communication distance.
 - b, the distance to extend the RS232 side: In the PC/MPI adapter RS232 port and PC's RS232 port, RS232 optical isolator installed in pairs to extend the distance of long-term transceiver.
 - Accessories: RS232 cable, length 5 meters, Siemens Product No.: 6ES7901-1BF00-0XA0, the cable is with the product distribution of. RS232 cable connection diagram is as follows:

